



@NSPLANT



@NANDSPLANT



BEN PLUMB



## PLANT HIRE GUIDE

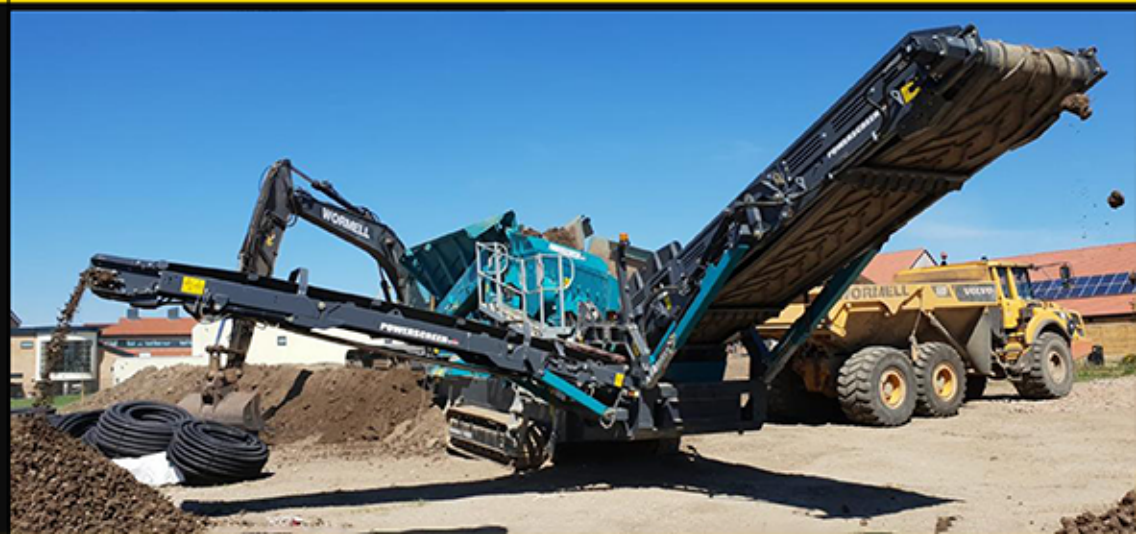


01502 710731



[WWW.NORFOLKANDSUFFOLKPLANT.CO.UK](http://WWW.NORFOLKANDSUFFOLKPLANT.CO.UK)

SANDPIT LANE | ELLOUGH INDUSTRIAL ESTATE | BECCLES | NR34 7TH



# ABOUT US

Incorporated in 2014 N & S Plant now boast one of the largest fleets for Plant Hires in the area for screeners, crushers and excavators; and we pride ourselves in our quality of service and value for your money.

We work all over the country, providing top-quality service to customers of all shapes and sizes, and our headquarters at Ellough holds an extensive and constantly changing stock of the very best industrial machinery. We are also investing in the latest efficient engine technology to ensure our plant is more than compliant on your sites and is safer for your operators.



We're dedicated to making sure you get the job well done and as smoothly as possible. You'll also have excellent support if something happens to go wrong while the machine is on hire.

N & S Plant are proud to offer a range of crushers and screeners for any requirements you may have- big or small. Our easy hiring process can be broken down into just four easy steps: the machine hire, the transport, the setup and all for one weekly price!

In addition to our stock of mini, midi and heavyweight diggers, we also offer demolition spec excavators and a wide range of specialist attachments to all major demolition contractors



# MINI DIGGERS



## 1.5 TONNE MINI-EXCAVATOR VOLVO EC15D

Operating Weight: 1,640 KG  
Width: 1 m  
Height: 2.37m  
Max Dig Depth: 2.35m

## 1.5 TONNE MINI-EXCAVATOR BOBCAT E16

Operating weight: 1,510kg  
Width: 1.33m  
Height: 2.17m  
Max dig depth: 2.60m



## 2.5 TONNE MINI-EXCAVATOR VOLVO ECR25D

Operating weight: 2,600kg  
Width: 1.55m  
Height: 2.53m  
Max dig depth: 2.67m



## 2.5 TONNE MINI-EXCAVATOR BOBCAT E25/E26

Operating weight: 2,600kg  
Width: 1.52m  
Height: 2.41m  
Max dig depth: 2.60m



# MIDI DIGGERS



## 5 TONNE MIDI-EXCAVATOR BOBCAT E45/E50

Operating Weight: 4,830kg  
Width: 1.96m  
Height: 2.54m  
Max Dig Depth: 3.54m



## 8 TONNE MIDI-EXCAVATOR VOLVO ECR88D

Operating Weight: 4,830kg  
Width: 1.96m  
Height: 2.54m  
Max Dig Depth: 3.54m



## 8 TONNE MIDI-EXCAVATORS CASE CX80C/ HYUNDAI 80

Operating Weight: 8,590kg  
Width: 2.32m  
Height: 2.76m  
Max Dig Depth: 4.18m



## 8 TONNE MIDI-EXCAVATOR BOBCAT E80

Operating Weight: 8,350kg  
Width: 2.35m  
Height: 2.68m  
Max Dig Depth: 4.15m



# HEAVY-WEIGHT DIGGERS



## 1.4 TONNE EXCAVATOR DOOSAN DX140

Operating Weight: 14,000kg  
Width: 1.33m  
Height: 2.70m  
Max Dig Depth: 5.20m



## 13 TONNE EXCAVATOR CASE 130D

Operating Weight: 13,800kg  
Width: 2.59m  
Height: 2.77m  
Max Dig Depth: 5.55m



## 21 TONNE EXCAVATOR CASE CX210D

Operating Weight: 22,000kg  
Width: 2.99m  
Height: 3.19m  
Max Dig Depth: 6.11m



# DEMOLITION DIGGERS



Fitted as standard on all demolition machines:  
-3rd Line Hammer Circuits  
-Protection cages & camera systems

## 9 TONNE MEDIUM-EXCAVATOR LIUGONG 909ECR

Operating Weight: 8,700kg  
Width: 2.4m  
Height: 2.7m  
Max Digging Depth: 4.09m



## 15 TONNE EXCAVATOR LIUGONG 915E DM

Operating Weight: 15,400kg  
Width: 2.69m  
Height: 3.05m  
Max Digging Depth: 5.47m



## 21 TONNE EXCAVATOR CASE CX21D

Operating Weight: 22,000kg  
Width: 3.19m  
Height: 3.28m  
Max Digging Depth: 6.65m



## 24 TONNE EXCAVATOR LIUGONG 924E DM

Operating Weight: 24,500 kg  
Width: 3.29m  
Height: 3.53m  
Max Digging Depth: 6.56m



# ATTACHMENTS



## SCREENING BUCKET GYRU-STAR 4-120HE

Weight: 600kg, Height: 880mm, Width: 1550mm  
Minimum Excavator Weight: 10-13 Tonne  
Screens materials down to 20mm  
Capacity: 410



## CRUSHING BUCKET MB BF60

Weight: 1.6 tonne, Height: 1100 mm, Width: 1000 mm  
Minimum Excavator weight: 8 tonne  
Capacity: 0.55m<sup>3</sup>



### **SORTING GRAB PLADDET PRG3-500**

Excavator weight: 15-19 tons  
Capacity: 500L  
Weight: 895 KG  
Width: 850 mm  
Closing force: 46 Kn  
Max operation pressure: 350 bar

### **COMPACT HYDRAULIC PECKER RAMMER 211**

Weight: 102 kg  
No. of Blows: 400 - 1900/min  
Excavator weight: >105 kg  
Total Length: 910mm



### **DEMOLITION/SORTING GRAB ROTAR RG 22-N**

Excavator weight: 15-22 tons  
Capacity: 530 L  
Weight: 1305 KG  
Width: 2000 mm  
Closing force: 53 Kn  
Max operation pressure: 350 bar



### **8 TONNE HYDRAULIC PECKER RAMMER S25**

Weight: 430 kg  
No. of Blows: 18001/min  
Carrying device: 5-8,5t  
Total length: 1540mm



### **ROTAR PULVERIZER MODEL: RDP 20S**

Height (Jaw Open): 700mm  
Width: 1980mm  
Length: 2070mm  
Cutting Force: 80 tonne  
Minimum Excavator Weight: 15-25tonne

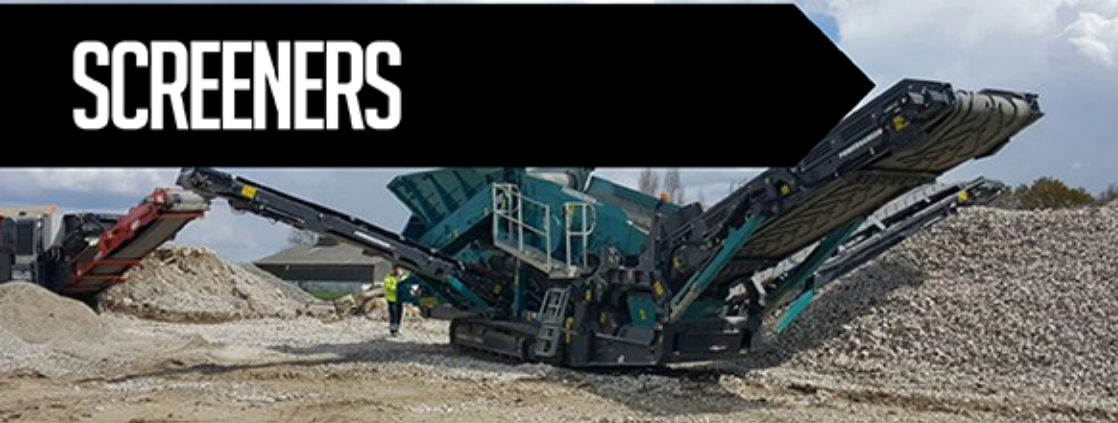
### **20 TONNE HYDRAULIC PECKER RAMMER 2577**

Weight: 1,700 kg  
No. of Blows: 450-750/min  
Carrying Device: 21-30t  
Total Length: 2299mm





# SCREENERS



## POWERSCREEN 1400X

### Benefits

- Output potential up to 500 tph
- Adjustable angle, grease lubricated 2 deck screen box
- Jack up screen facility to aid mesh changes
- Hydraulic folding conveyors with excellent stockpiling capacity
- Rapid set-up & shutdown time
- Two speed tracks



## POWERSCREEN PREMIERTRAK 600

### Benefits

- Output Potential: up to 280 tph
- Smart design minimises weight but retains strength and robustness
- Rapid conversion from 3 way split to 2 way split - fully hydraulic
- High aggression screenbox with ability to adjust stroke
- Variable speed hopper featuring heavy duty rollers & rigid hopper
- Ultra-low fuel consumption with optimised hydraulics



## MCCLOSKEY R105

### Benefits

- 12x4.5 heavy duty high energy 2 bearing screenbox.
- Direct feed Hardox lined hopper.
- Integrated hydraulic folding stockpiling conveyors.
- Fast on site setup time

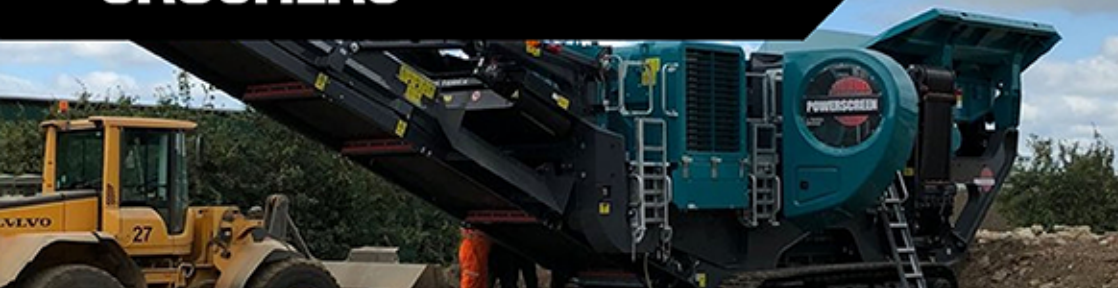


## TEREX TROMMAL TTS620

### Benefits

- Double sided unrestricted drum access
- Advanced feeder control system
- Fully sealed feeder reducing spillage
- Feeder belt driven by powerful recessed gearbox and hydraulic motor

# CRUSHERS



## POWERSCREEN PREMIERTRAK

### Benefits

- Output Potential of up to 400tph
- Dust suppression system
- Economical to operate with low fuel consumption
- Angle adjustable product conveyor, remote control via umbilical, PLC control system with auto start facility
- Fitted with Powerscreen Pulse Telematics system



## SANDVIK OJ341

### Benefits

- Hydraulically adjustable jaw setting to maximize your output
- Reverse crushing action to crush sticky material or relieve blockages
- Hydraulic drive
- Raise/lower facility on the main conveyor



## POWERSCREEN METROTRAK

### Benefits

- Output potential - up to 200tph (220 US tph)\*
- Centralised hydraulics and electrics, and dust suppression system
- Economical to operate with a highly fuel efficient direct drive system
- Powerscreen Pulse Intelligence telemetry system as standard



## RED RHINO 5000- MINI CRUSHER

- Capable of producing up to 15-20T per hour, the Rhino 5000 is small but mighty, and perfect for anyone in need of a cost effective means of crushing raw materials on site.
- Output size choice: 10mm to 100mm
- Output: 15-20 tph

# DUMPERS



## 1 TONNE DUMPER MECALAC TA1EH

Operating Weight: 1,340 kg  
Width: 1.11m  
Height: 2.84m  
Payload: 1000 kg



## 3 TONNE DUMPERS MECALAC TA3SH/TEREX TA3 SH

Operating Weight: 2,380 kg  
Width: 1.85m  
Height: 2.92m  
Payload: 3000 kg



## 6 TONNE DUMPER TEREX TA6S

Operating Weight: 4,410kg  
Width: 2.10m  
Height: 3.00m  
Payload: 6,000kg



## 9 TONNE DUMPER TEREX TA9S

Operating Weight: 5335kg  
Width: 2.50m  
Height: 3.34m  
Payload: 9,000kg



# LOADING SHOVELS



## 17 TONNE LOADING SHOVEL

### LIUGONG 856H

Operating Weight: 17,000 kg

Bucket Range Capacity: 2.6 m<sup>3</sup> - 5.6 m<sup>3</sup>

Bucket Breakout Force: 179 kN

# ROLLERS



## ARTICULATED TANDEM ROLLER

### HAMM HD 12 VV

Operating Weight: 2,695 kg

Drum width: 1,200 mm

Also on offer: Terex TV800 & Terex TV1200

COMING SOON 2019



8m-13m

TELE-HANDLERS

18M HIGH REACH

